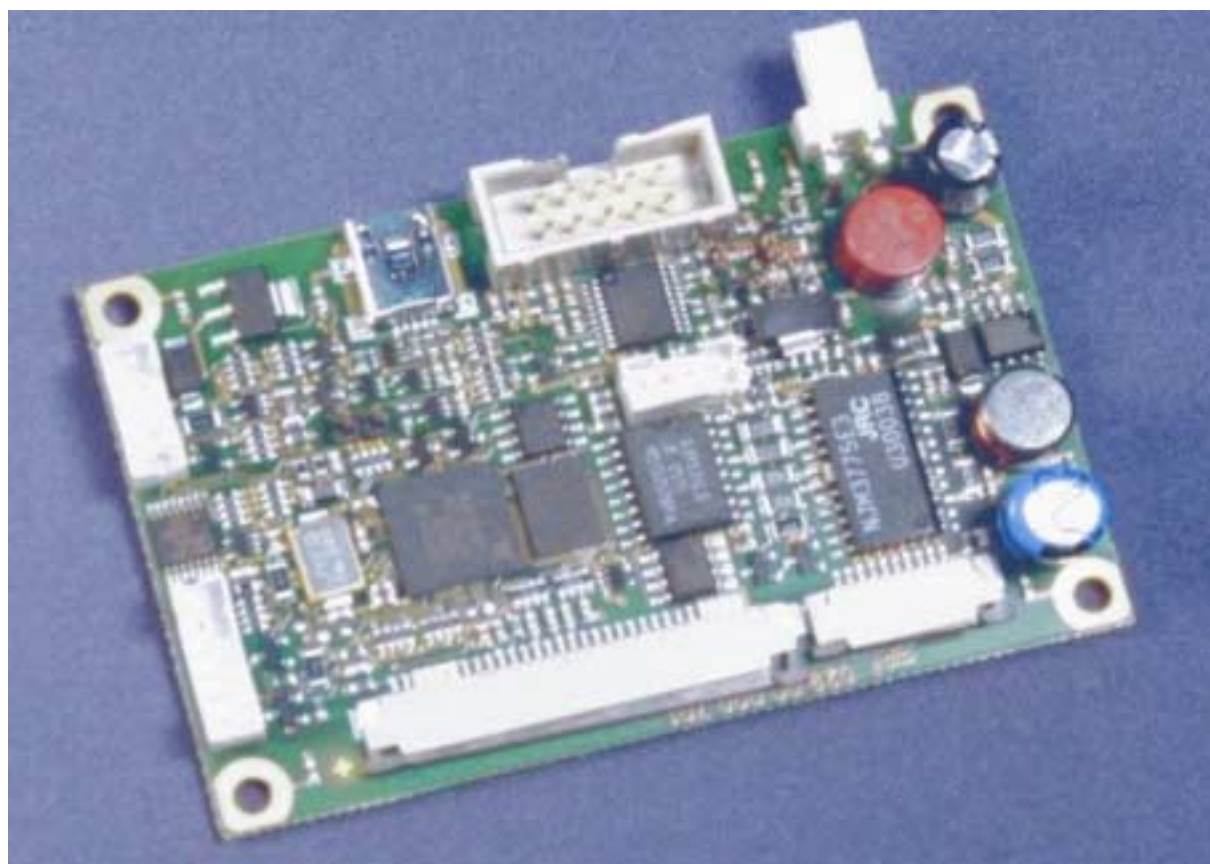


# SPECIFICATION



**Controller PRESTO T26**

CPI Product number:  
014 001 011 01

**Operating field:**

Controller for FUJITSU Printer mechanism FTP 609

**Applications:**

Receipt- Printer  
Ticket- Printer  
Protocol- Printer  
Kiosk- Printer

**Specifications****General:**

Emulation	Driver in Bit- Image Mode for Windows 2000, XP, Linux CUPS or ASCII Mode with ESC/FS Commands
Printing method	Non impact line Direct thermal sensitive
Resolution	203 dpi
Print speed	max. 200 mm/sec
Print width	Automatically detected
Interfaces	RS232 up to 115 Kb, USB 1.1 Full Speed

Power supply	24V DC +/- 5%
Current consumption	stand by: 0,15 A typical: 1,2 A peak: 3,5 A
Operating temperature	-20 – +85° Celsius
Operating humidity	-20 - +85° Celsius (no condensation)

**Paper management**

Paper loading	Automatically or easy load
Paper cutting	Tear- off, full- and partial cut
Sensorik	complete monitoring of the paper path. PNE, PE
Paper length	no Limit, format length or black mark
Dimensions (B*L)	50*77 mm
Weight	

**Connectors**

Print mechanism	Molex 52610-3090 and 52610-1090
Cutter	JST-EH-B4B 4 pin
Keyboard	JAE-ILS6PS2T2EF 6 pin.
RS232	Molex RJ45 MX95001S-6
Power supply	2 pin JST VH B2PS

**ASCII Mode**

Print direction	Portrait/Landscape/Upside down
Fonts/CodePages	numbers of Character dependent on free Memory
Standard Font	CodePage 437 in Arial 20, 16, 14, 12 and 10 *22 Dots
Barcodes	Code 2/5, Codabar, Code 39, Code 128, EAN 8/13/128, UPCA/E
Character addressing	1Byte CodePage 2Byte Unicode
Character modification	Enlarge, emphasise, underline, Reverse, italic, Sub- Superscript
Label graphics or text	numbers of Label dependent on free Memory

Graphics	HP PCL5- line graphics
----------	------------------------

Memory	128 KB Flash for Fonts, Label, Download Character and NVRam
--------	---

**Tools:**

Label	Creating a download graphic-Labels
-------	------------------------------------